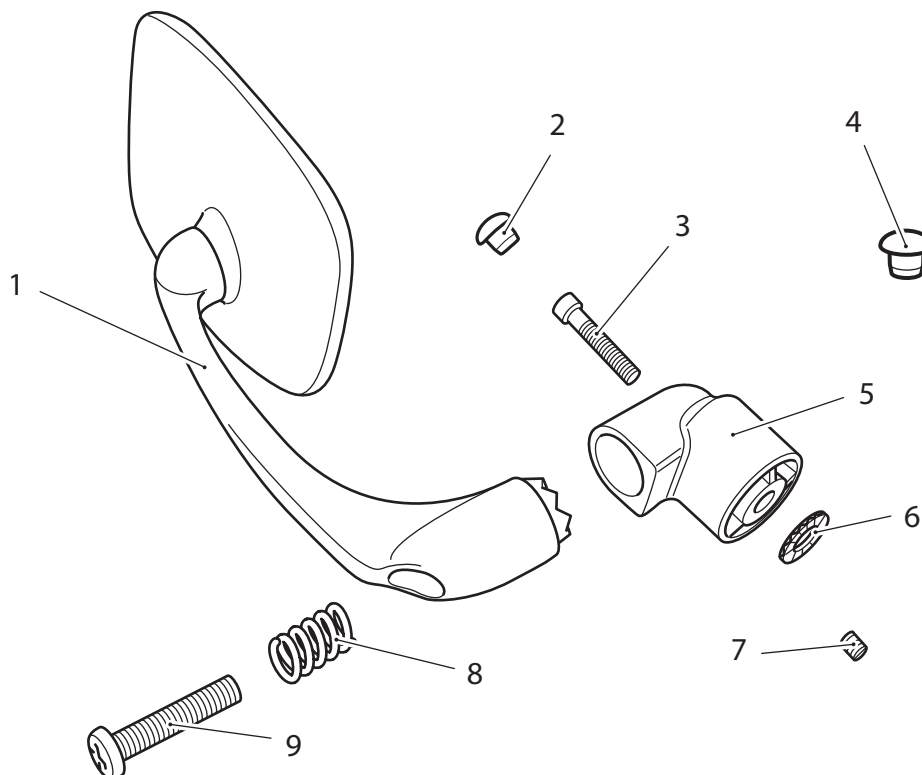


Fitting Instructions:
Thruxton
Bar End Mirror Kit - A9638020



Parts Supplied:

1. Mirror, bar end.	2 off	6. Serrated washer.	2 off
2. Plug, plastic, M9.	2 off	7. Grub screw, M6.	2 off
3. Capscrew, M5 x 35mm.	2 off	8. Spring.	2 off
4. Plug, plastic, M10.	2 off	9. Screw, M8 x 35mm.	2 off
5. Adaptor.	2 off		

Warning

This accessory kit is designed for use on Triumph Thruxton motorcycles only and should not be fitted to any other Triumph model or to any other manufacturer's motorcycle. Fitting this accessory kit to any other Triumph model or to any other manufacturer's motorcycle, may interfere with the rider and could affect the stability and handling of the motorcycle leading to loss of control and an accident.

Warning

Always have Triumph approved parts, accessories and conversions fitted by a trained technician of an authorised Triumph dealer. The fitment of parts, accessories and conversions by a technician who is not of an authorised Triumph dealer may affect the handling, stability or other aspects of the motorcycles operation which may result in loss of motorcycle control and an accident.

Warning

Throughout this operation, ensure that the motorcycle is stabilised and adequately supported on a paddock stand to prevent risk of injury from the motorcycle falling.

NOTE

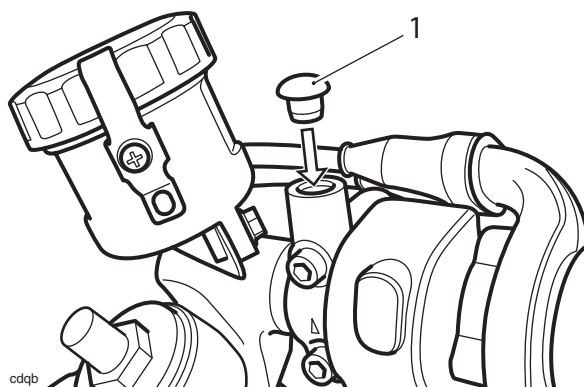
- **Completely read all the instructions before commencing the installation and set up of the bar end mirror kit in order to become thoroughly familiar with the kit features and the installation process.**

1. Undo the locknut on the right-hand mirror stem and remove the mirror.

NOTE

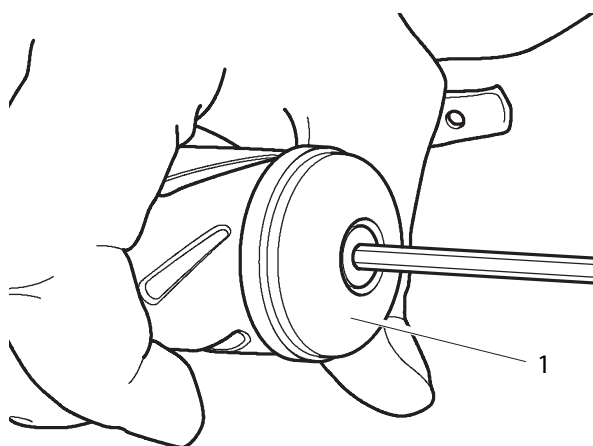
- **Retain the mirror for re-use if the motorcycle is returned to original condition.**

2. Insert the supplied M10 plastic plug into the threaded hole left by the mirror.



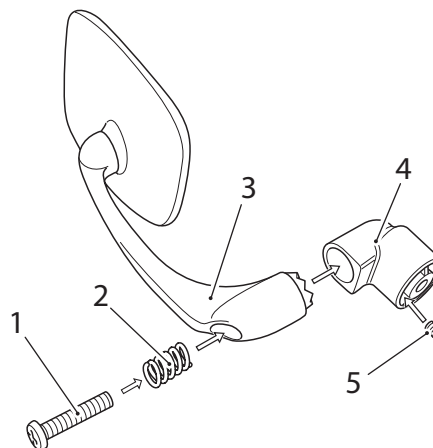
1. **M10 plastic plug**

3. Undo the screw and remove the right-hand end weight.



1. **End weight**

4. Assemble the adaptor to the mirror positioning the M8 x 35mm screw, spring and adaptor as shown.



1. **Screw, M8 x 35mm**

2. **Spring**

3. **Mirror**

4. **Adaptor**

5. **M6 grub screw**

5. Screw in the M8 x 35mm screw until the resistance of the spring is felt, then tighten a further two turns only.

Warning

It is important to tighten the M8 x 35mm screw only as described. If the screw is too loose, the mirror may move when the motorcycle is ridden. If the screw is too tight, it will not be possible to adjust the mirror arm to provide rearward visibility in the riding position. Both conditions will result in a dangerous riding condition which may lead to loss of motorcycle control and an accident.

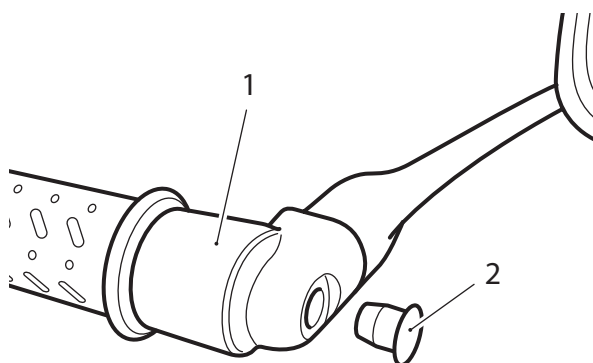
6. Insert the M6 grub screw into the threaded hole inside the adaptor. Tighten the grub screw to lock the M8 x 35mm screw in position.

- Loosely secure the mirror assembly to the handlebar end with the M5 x 35mm screw and serrated washer. Ensure the washer is positioned between the handlebar and the mirror assembly.
- Move the mirror assembly to the desired position, tighten the M5 x 35mm screw to **9 Nm**.

NOTE

- The mirror arm can be positioned at **45° increments**. To adjust the mirror arm, move it against the resistance of the spring until it clicks into the next position.

- Insert the M9 plastic plug into the mirror adaptor as shown.



- Mirror adaptor
- M9 plastic plug

- Position the mirror to give rear visibility in the riding position.
- Fit the left-hand bar end mirror in the same manner.

Warning

After fitting the accessories kit the motorcycle will exhibit new handling characteristics. Be particularly aware of the extra width of the motorcycle with the accessory mirrors fitted. Operate the motorcycle in a safe area free from traffic to gain familiarity with any new mirror positions, handling characteristics and dimensional changes. Operation of the motorcycle when not familiar with any new mirror positions, handling characteristics or dimensional changes may result in loss of motorcycle control and an accident.

Warning

Periodically check that the mirror assembly is still held securely to the handlebar end by the M5 x 35mm bolt and that the M8 x 35mm screw is still locked in position by the M6 grub screw. Failure to check these items may result in movement of the mirror when riding and a dangerous riding condition which may lead to loss of control and an accident.

Warning

Never attempt to clean or adjust the mirrors whilst riding the motorcycle. Removal of the rider's hands from the handlebars whilst riding the motorcycle will diminish the ability of the rider to maintain control of the motorcycle. Attempting to clean or adjust the mirrors whilst riding the motorcycle may result in loss of motorcycle control and an accident.

 **Warning**

If, after fitment of the accessory kit, there is any doubt as to any aspect of the performance of the motorcycle, contact an authorised Triumph dealer and do not ride the motorcycle until the authorised dealer has declared it fit for use. Riding a motorcycle when there is any doubt as to any aspect of the performance of the motorcycle may result in loss of control of the motorcycle leading to loss of motorcycle control and an accident.

 **Warning**

Never ride an accessory equipped motorcycle at speeds above 130km/h (80 m.p.h.).

The presence of accessories may cause changes in the stability and handling of the motorcycle. Failure to allow for changes in motorcycle stability may lead to loss of control or an accident.

Remember that the 130km/h (80 m.p.h.) limit will be reduced by the fitting of non-approved accessories, incorrect loading, worn tyres, overall motorcycle condition and poor road or weather conditions.

 **Warning**

Only operate this Triumph motorcycle at high speed in closed-course on-road competition or on closed course racetracks. High-speed operation should only then be attempted by riders who have been instructed in the techniques necessary for high speed riding and are familiar with the motorcycle's characteristics in all conditions. High-speed operation in any other circumstances is dangerous and will lead to loss of motorcycle control and an accident.